

The CSJ Center for Reconciliation and Justice
and the Bellarmine Forum Present:

PEOPLE, PLANET, PROFIT

Business Today, Tomorrow – What Next?



LMU|LA

CSJ Center for
Reconciliation and Justice

LMU|LA

Bellarmino Forum

LMU|LA
College of Business
Administration

LMU|LA
Academy of Catholic
Thought and Imagination

LMU|LA
Bellarmino College
of Liberal Arts

LMU|LA
School of Film
and Television





PEOPLE, PLANET, PROFIT

Schedule of Events

Tuesday, October 20, 2015

- **9:40am – 11:10am: Ahmanson Auditorium**

Welcome: Remarks by Dean Robbin Crabtree and Introduction by Lawrence Kalbers, Professor, Accounting. Followed by a 5 minute video with students and faculty sharing their passions, concerns, and challenges with doing business in the marketplace.

Interfaith Panel: Professors engage the audience in a discussion about the intersection of faith and values in the world of business.

Panelists: Arthur Gross-Schaefer, Professor, Marketing and Business Law; Amir Hussain, Professor, Theological Studies; Jonathan Rothchild, Associate Professor, Theological Studies; and Christopher Chapple, Doshi Professor of Indic and Comparative Theology, Theological Studies

- **2:40pm – 4:10pm: Von der Ahe Suite, Hannon Library**

Is American Capitalism Broken? Comments on the Causes of Inequality of Income and Wealth

Stephen Young, Global Executive Director of Caux Round Table, will discuss the inequality of income and wealth in the United States from historical, economic, and moral perspectives. He will propose that many mutually supporting causes have issued forth from excessive financialization of the post-industrial economy and the rise of a new class of rent seekers. He will address how government and business can work together within a capitalist framework to restore the power of the real economy.

- **4:30pm – 5:45pm: Von der Ahe Suite, Hannon Library**

Profit, Purpose and People: A Path to Sustainable Success

Is it possible to build and sustain a for-profit organization that exists primarily for the good of its people? Kathy Mazzarella, Chairman, President and CEO of Graybar, will discuss how an employee ownership model gives employees a stake in the success of an organization, and how that ownership influences the company's strategy, culture, decision-making, core values and commit-



ment to sustainability. The session will also provide insight on how companies owned by employees can drive innovation and competitiveness, while remaining true to their values and preserving their cultural strengths.

Followed by Reception in Von der Ahe Suite, Hannon Library

<http://academics.lmu.edu/csjsymposium>

Wednesday, October 21, 2015

- **9:40am – 11:10am: Hilton 100**

Business and Socially Responsible and Just Practices: The LMU Case

This session will discuss how organizations can create more sustainable and socially responsible supply chains by implementing responsible and just practices such as responsible sourcing and fair trade. Raymond Dennis, Associate VP for Auxiliary Management and Business Services at LMU, and Richard Rosen from Sodexo will cover the LMU case and present some of the socially just business policies including responsible sourcing, doing business with companies that have socially just practices as well as organizations whose values are mission driven toward people, planet and profit, and fair trade practices.

Moderator: Ivan Montiel, Associate Professor, Management

Presenters: Raymond Dennis, Associate VP, Auxiliary Management and Business Services, LMU and Richard Rosen, Senior Director of Supply Management – Proteins, Sodexo

Discussant: Jensen Kaplan, MBA Candidate, LMU

- **12:40pm – 2:10pm: Hilton 100**

Sustainable Practices: Examples from Business and Higher Education

Sustainable practices are being more widely adopted by business, government, and not-for-profit organizations. LivingHomes aspires to 'wed profit and purpose' by developing homes that make great design, functionality, and sustainable design practical and affordable. Loyola Marymount University, in tune with its mission, is committed to sustainable practices on campus.



PEOPLE, PLANET, PROFIT

What can we learn from these organizations that can be applied to the behavior of other organizations and individuals?

Moderator: Lawrence Kalbers, Ph.D, Professor of Accounting, College of Business Administration

Presenters: Steve Glenn, Founder and CEO, LivingHomes and Ian McKeown, Sustainability Coordinator, LMU

- **4:30pm – 7:00pm: Hilton 100**

Dirty Hands: Questioning Investment and Divestment in Fossil Fuels

A panel discussion followed by Q&A, focusing on issues related to ethical management of investments, particularly fossil fuels. Are universities – particularly universities with strong, explicit values-based missions – responsible for overseeing their investments in a manner aligned with their mission and values? Specifically, what should universities do with respect to the recent push by activists to have universities, corporations, and municipalities divest funds from fossil fuels contributing to runaway anthropogenic climate change?

Moderator: Brian Treanor, Professor, Philosophy

Director, The Academy for Catholic Thought and Imagination

Presenters: Lisa Laird, VP Investments and Cash Management at St. Joseph Health; Susan Smith Makos, Vice President of Social Responsibility, Mercy Investment Services; Carlos Davidson, Professor and Environmental Studies Program Coordinator, San Francisco State University

Followed by Reception in Von der Ahe Suite, Hannon Library

<http://academics.lmu.edu/csjsymposium>

Thursday, October 22, 2015

- **9:40am – 11:10am: Ahmanson Auditorium**

Just Employment at LMU and Beyond

Do we have an obligation to create just workplaces? What is “just



employment”? What are the economics of just employment? Is a just employment policy compatible with a viable business model? What strategies can we follow in respecting the dignity of work? Do we have an obligation to ensure LMU provides a just workplace to its employees? There are the sorts of questions that student, faculty, and others are raising at institutes of higher education throughout the United States. In this panel, we bring the conversation home to LMU – and beyond.

Moderator: Anna Harrison, Associate Professor, Theological Studies
Presenters: Alex Taliadoros of Georgetown University’s Kalmanovitz Initiative; Matthew Petrusek, Assistant Professor, Department of Theological Studies; Cathleen McGrath, Associate Professor, Management; Sean D’Evelyn, Assistant Professor, Department of Economics and Armani Marsalis Gates ’16, Political Science)

- **11:20am – 12:50pm: Ahmanson Auditorium**

Screening of *La Ciudad*

Discussion with film director David Riker

Moderator: Kennedy Wheatley, Assistant Professor, Production, Film and Television

Followed by reception in Atrium

- **2:40pm – 4:00pm: Ahmanson Auditorium**

Gentrification and the Community

Moderator: Jessica Viramontes, Program Coordinator, Center for Service and Action

Panelists: Isela Gracian, President of East LA Community Corporation and Nicole Powell (’16, Communication Studies/Journalism) and Alejandra Alarcon, Administrative Coordinator, Center for the Study of Los Angeles

<http://academics.lmu.edu/csjsymposium>



PEOPLE, PLANET, PROFIT



Christopher Chapple

Christopher Chapple is Doshi Professor of Indic and Comparative Theology and Director of the Master of Arts in Yoga Studies at LMU. He has published more than a dozen books, many on topics related to world religions and ecology. He serves on the advisory board for the Forum on Religion and Ecology (Yale) and as editor of the journal *Worldviews: Global Religions, Culture, and Ecology* (Brill).



Carlos Davidson

Carlos Davidson is a Professor of Environmental Studies at San Francisco State University. He was a leader of the successful efforts to get San Francisco State to divest its endowments holdings from fossil fuels. Davidson is cofounder of the Faculty Staff Divestment Network – a national network of college and university faculty and staff interested in fossil fuel divestment and climate change issues. Davidson has been active in climate and sustainability issues on campus and in the community, including helping found the University Sustainability Committee, co-authoring the campus' first greenhouse gas emissions inventory, and leading a successful effort to get a sustainability general education requirement for all undergraduates. His academic research is the field of conservation ecology, on the causes of amphibian population declines. He is also interested in issue of environmental justice, climate change and the relationships between economic growth and environmental destruction. Davidson earned his Ph.D. in ecology at the University of California, Davis and a masters degree in economics from U.C. Berkeley.



Raymond A. Dennis, MBA, MTH, CASP

Currently serves as Associate Vice President of Auxiliary Management and Business Services for Loyola Marymount University, has an MBA from Pepperdine University, Master of Arts in Theology from Loyola Marymount University, and is a Certified Auxiliary Service Professional by the National Association of College Auxiliary Services. Having worked as a Senior Accountant, Cash Manager, University Bursar, and now overseeing Dining, Textbooks, Printing, Mail Services, and Campus Card Office, the Business Services must demonstrate leadership in Sustainable practices and Environmental Stewardship to reflect our mission and demonstrate Social Responsibility to our Faculty, Staff, and Students.



Armani Marsalis Gates

Armani Marsalis Gates I is a senior Political Science major with a minor in African American Studies. Former president of Model UN and Amnesty International's LMU Chapter. During his presidency he organized protests, demonstrations, petitioned, and spoke for those whose voices were silenced. He is a fervent supporter of human rights and advocate for social justice issues. After graduation he hopes to enroll in a Dual JD and PHD program in Public Policy.



Steve Glenn

Steve Glenn is the founder and CEO of LivingHomes, LLC (www.livinghomes.net), a premier developer of modern, prefabricated homes that combine world-class architecture with an unparalleled commitment to healthy and sustainable construction. The first LivingHome, designed by Ray Kappe, FAIA, was installed in eight hours. It became the first home ever to receive a LEED for Home Platinum rating. Thirteen LivingHomes have been certified LEED Platinum and one LEED Gold, making the company one of the most experienced designers of homes at the highest level of LEED certification. LivingHomes are available in standard or customized configurations to builders, developers and individuals. LivingHomes have garnered significant industry recognition including the AIA's top sustainable award, Green Builder Magazine's Home of Year, Business 2.0 "World's 11 Coolest Products", and Business Week's "Architectural Wonders of the World." LivingHomes are available in standard or customized configurations to builders, developers and individuals. In addition to design, LivingHomes is developing affordable housing communities for Make It Right, at the Ft. Peck Indian Reservation in Montana and for an East LA Community Corporate project in Los Angeles, and for its own project in Atwater Village, Los Angeles. Before LivingHomes, Glenn worked with the Clinton HIV/AIDS Initiative (CHAI) and managed the development of a \$220 million program in Mozambique, the first program CHAI launched in Africa. Glenn is founder and former Chairman and CEO of PeopleLink, a leading provider of enterprise ecommunity solutions, which raised \$35 million from AT&T Ventures, GE, Goldman Sachs, idealab and others. Glenn was a founding partner of idealab, a business incubation firm that raised \$1 billion and that founded or invested in a number of successful companies including GoTo/Overture (OVER), NetZero/United Online (UNTD), CitySearch (TMCS), Tickets.com (TKTS), eToys and CarsDirect. Glenn worked



PEOPLE, PLANET, PROFIT

for Walt Disney Imagineering as co-director of the Virtual Reality Studio. Glenn co-founded Clearview Software, which was sold to Apple Computer where Glenn later served as a marketing specialist. He holds a bachelor's degree with honors from Brown University, and was a Coro Fellow. Glenn is a co-founder and chair of the Sustainable Business Council, www.sustainablebc.org, co-founder of the Kaia Parker Dance Endowment, www.kaiaparker.org, and a co-founder and former board member of Hope Street Group, www.hopestreetgroup.org and the Brown University Entrepreneur Forum, www.brownep.org. He was a Judge for the US Energy Department's 2013 Solar Decathlon competition, www.solardecathlon.gov. Glenn was named the Clean Tech CEO of the Year by Clean Tech Week; Environmental Entrepreneur of the Year by LA City Council/Faith2Green; and Greatest Person of the Day by Huffington Post. Glenn holds two patents.



Isela Gracian

Isela Gracian currently serves as President for East LA Community Corporation. A graduate of UC Davis, Isela joined ELACC in 2004 as a coordinator for a job training and placement program and in her 11 years of service she has held various management positions including being Director of Community Organizing. Isela has led the organization's strategic and operational planning efforts since 2010. She has overseen the organization's media outreach and public relations efforts and is highly adept and fluent in strategic messaging, traditional and new media management in both English and Spanish. The California Women's Foundation recognized Isela for her thought-leading work formulating solutions to community issues by appointing her a California Women's Policy Institute Fellow in 2006/2007. She serves on various boards including Strategic Concepts in Organizing and Political Education (SCOPE) and California Reinvestment Coalition.



Anna Harrison

Anna Harrison is associate professor of Theological Studies. An historian of the western Christian Middle Ages, she has written on the monastic tradition and is at work on a book titled "'Thousands and Thousands of Lovers': Sense of Community Among the Nuns of Helfta."



Amir Hussain

Amir Hussain, a Canadian Muslim, is a professor in the Department of Theological Studies at LMU. He specializes in the study of contemporary Muslim societies in North America. Amir is the author or editor of five books, as well as over 50 scholarly articles and book chapters. He is the editor of the *Journal of the American Academy of Religion*, which is the premier scholarly journal for the study of religion. In 2008, he was made a fellow of the Los Angeles Institute for the Humanities.



Lawrence Kalbers

Lawrence Kalbers is a full professor, the R. Chad Dreier Chair in Accounting Ethics, chair of the Department of Accounting, and director of the Center for Accounting Ethics, Governance, and the Public Interest at Loyola Marymount University. He earned a B.A. at Wittenberg University, a M.S. at Kent State University, and a Ph.D. from Penn State University. Before joining Loyola Marymount in 2005, he was a professor of accounting, the director of the School of Professional Accountancy, and the associate dean of the College of Management at the C.W. Post Campus of Long Island University. Kalbers also has taught at Wittenberg University, Penn State University, and John Carroll University. His teaching interests are in the areas of auditing, financial reporting, and accounting and business ethics. Kalbers gained auditing and accounting experience working for several accounting firms, including Ernst & Ernst and Ernst & Young, and as a sole practitioner. He also has served on boards for several not-for-profit organizations. Kalbers has published articles on a variety of topics, including audit committees and corporate governance, audit quality, auditor burnout, auditor organizational commitment, accounting education, accounting history, ethics, and professionalism. In addition to published research, Kalbers has presented at numerous academic and professional conferences. Kalbers is a Certified Public Accountant and is a member of the American Institute of CPAs, the American Accounting Association, the Institute of Internal Auditors, and the California Society of CPAs.



PEOPLE, PLANET, PROFIT



Lisa M. Laird, CFA

Vice President, Investments and Cash Management
St. Joseph Health

Lisa Laird is VP of Investments and Cash Management at St. Joseph Health and is responsible for investment oversight of the system's \$1.6 B in operating and insurance assets as well as managing the system's cash. She is a member of SJH's Retirement Plan Committee with oversight responsibility for over \$2.0 B in defined contribution assets.

Prior to joining SJH, Lisa held positions at Towers Watson Investment Services and Wilshire Associates. Lisa holds a M.B.A. from Duke University's Fuqua School of Business and a B.S. from California State Polytechnic University at Pomona. She earned the Chartered Financial Analyst designation in 2005 and is a member of the CFA Society of Orange County. Lisa serves as a member of Board of Directors' Investment Advisory Committee for CalOptima and is Co-Chair of the 2015 Pensions & Investments West Coast Defined Contribution Conference. She also serves as Vice Chairman of the Board of Directors for the Seva Foundation. Over the past 35 years, Seva-supported programs and partners have helped to restore sight to over three million blind people.



Susan Smith Makos

Susan Smith Makos joined Mercy Investment Services, the investment program of the Sisters of Mercy of the Americas as director of social responsibility in 2008 and became vice president of social responsibility in 2011. She is responsible for designing and implementing a socially responsible investment program, including investment screens, shareholder engagement with companies and community/impact investing. Previously, Susan served in a variety of roles in more than 20 years with Mercy Health, a health system based in Cincinnati, Ohio. Since 2006, her role has been as social responsibility investment adviser, providing direction to social responsibility activities in its investment programs. Prior to that, Susan served for six years as executive vice president. She served as a member of the board of the Interfaith Center on Corporate Responsibility and as its board chairperson from 2010 to 2012. She currently serves as a member of the board of the Franciscan Sisters Sponsored Ministries, Manitowoc, Wisconsin. Susan holds a bachelor of arts degree cum laude in mathematics and



spanish from Kenyon College and a juris doctor degree cum laude from Indiana University. She is licensed to practice law in Ohio.



Kathy Mazzarella

Kathleen M. Mazzarella is chairman, president and chief executive officer at Graybar. She has been a member of Graybar's board of directors since 2004. During her board tenure, Kathy served on the Audit Committee and as Chair of the Compensation Committee. She has also served on the board of Graybar Canada from

2004 to 2009.

Kathy joined the company in 1980 and successfully advanced through roles in customer service, sales, marketing, strategic planning, human resources and management. Starting as a customer service representative at San Francisco, Kathy progressed through various quotations and sales positions before transferring to St. Louis as a senior sales representative in 1984. In 1991 she was named field sales manager in St. Louis and was appointed district marketing manager, commercial and communications markets the following year.

In 1994 Kathy joined Graybar's corporate headquarters as national product manager and was named director of sales in 1997. The following year she was appointed vice president, corporate accounts and international, a position she held until June, 2001, when she was promoted to vice president, strategic planning. In January 2004 she was promoted to vice president, human resources and strategic planning and was elected to Graybar's Board of Directors. Kathy was named senior vice president, human resources and strategic planning in December, 2005. In April, 2008, she became senior vice president, sales and marketing comm/data and in March, 2010, was appointed senior vice president, sales and marketing. In December, 2010, she was appointed to the position of executive vice president and chief operating officer. She was appointed the 11th president and chief executive officer in company history in June of 2012 and became chairman of the board of directors in January of 2013.

Kathy has been recognized with two of Graybar's most prestigious awards. She is a lifetime member of the Sigma chapter of Gamma Beta Epsilon, Graybar's honor society for top-performing sales representatives. She also earned the



company's Elisha Gray Excellence in Communications award in 1993.

Kathy holds an associate degree in telecommunications engineering, a bachelor's degree in applied behavioral sciences and a master's degree in business administration. She has attended executive education training at Harvard Business School, Wharton, University of Michigan, and Northwestern's Kellogg Business School. Kathy serves on the boards of the Federal Reserve Bank of St. Louis, St. Louis Regional Chamber, United Way of Greater St. Louis, Civic Progress, St. Louis Club and the NAW Institute. She also serves on the NAED Channel Advantage Partnership Council and the Webster University School of Business and Technology's Advisory Board. In addition, she is a member of The Committee of 200 as well as a member of the International Women's Forum. She has also been a track speaker for the Council of Logistics Management.

Kathy's business achievements and community involvement helped her earn the St. Louis "40 Under 40" award in 2000. In 2004, Kathy was honored as one of the Most Influential Businesswomen in St. Louis—an award presented by the *St. Louis Business Journal*. Kathy's views on human resources strategy were included as a chapter in *Inside the Minds*, a book featuring interviews with top HR practitioners across the United States. She was also featured as one of the "Women Worth Watching in 2010" in the September/October, 2009, issue of *Profiles in Diversity Journal*. Kathy has been the driving force behind the establishment of a women's networking group at Graybar and in promoting careers for women in the wholesale distribution industry. In 2011, she received the Outstanding Alumna Award from the George Herbert Walker School of Business & Technology at Webster University. In 2014, Kathy was recognized by the Urban League of Metropolitan St. Louis as one of its distinguished women in leadership.

Kathy is married and has two grown daughters. Her hobbies include Tae Kwon Do, cooking, and reading.



PEOPLE, PLANET, PROFIT



Ian McKeown

Ian McKeown stands at the forefront of the global environmental sustainability movement. He has spent the past seven years leading all aspects of the environmental sustainability programs for large complex organizations and has consulted on numerous projects. Ian's zeal for environmental preservation is a direct result of his love of adrenaline filled nature based action sports, passion for teaching, scientific curiosity, and emerging interest in technology focused entrepreneurship based environmental solutions.

A calculated risk-taker and futuristic thinker with extensive environmental science knowledge and business acumen, Ian has championed sustainability programs within two large Universities. These programs are fueling business driven groundbreaking initiatives in public and private environmental conservation. Ian was the first individual to build, design, and lead the strategic sustainability program for the University of Miami. Currently, Ian directs the Sustainability program at Loyola Marymount University in Los Angeles.

At Loyola Marymount University Ian has taken the lead on numerous strategic projects, established a network of partners, lectured, directed class projects, managed interns, organized large scale events, managed teams, educated the local community, conducted media interviews, "greened" numerous events, and engaged in environmental research. Ian has used his extensive knowledge of carbon footprint analysis and reduction methods to shape the program. In particular, his efforts in the past year have resulted in approximately a 20% reduction in greenhouse gas emissions. The university has received recognition for these efforts from The Princeton Review, The Sierra Club, The League of American Bicyclists, and numerous media outlets.

Additionally, Ian has also influenced the environmental programs of The City of Miami and The City of Coral Gables by sharing his expertise as a member of government task forces. Furthermore, Ian has championed the environment working on strategic plans, scientific research, and events for numerous non-profits. This includes The Surfrider Foundation, Streetwaves, an international medical outreach expedition to Haiti, public health research, and numerous other programs.



Ian holds multiple degrees from the University of Miami. These include a Master of Science in Management of Technology in Industrial Engineering, a Bachelor of Arts in Ecosystem Science & Policy with a second major in Economics, and a minor in Meteorology. Additionally, Ian also completed three additional years of science coursework in UM's Post-Baccalaureate Science Program.

Ian is driven to protect the environment by his love of the outdoors. In particular Ian is an accomplished sponsored Kiteboarder. His riding has been featured in numerous media outlets, and he has even competed in such prestigious events as the Real Watersports Triple S Invitational. Ian currently has sponsorship affiliations with Tona Boards, Liquid Force, Dakine, and Patagonia.

Ian has also found great joy in coaching the sports he loves. He has established a network of satisfied students as a kiteboard instructor. Additionally, Ian has spent time volunteering teaching surfing to at risk youth and those affected by paralysis. While working as a snowboard instructor Ian even assisted with the adaptive skiing program for blind students.

Outdoor sports have engendered Ian's profound sense of responsibility to protect our natural resources and introduce others to an active outdoor lifestyle. It is his goal to combine his passions for conservation, adventure, teaching, action sports, and public service to elevate global environmental policy by inspiring others to live an active lifestyle that develops a relationship with nature.



Matthew Petrussek

Assistant Professor of Theological Studies

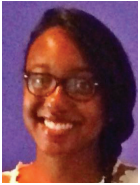
Ph.D., University of Chicago Divinity School, 2013; M.A., Yale

University, 2005; B.A., Washington and Lee University, 2002.

Dr. Petrussek's interests and specializations include meta ethics, the intersection of philosophical and theological ethics, Christian ethics, ethics and political theory, natural law, virtue theory, distributive justice, and human dignity. He has published in the *Journal of the American Academy of Religion*, the *Journal of Moral Philosophy*, and *Philosophy and Theology*, and has served as an on-air analyst for Noticias MundoFox and CNN Español.



PEOPLE, PLANET, PROFIT



Nicole Powell

Nicole Powell is a senior Communication Studies major with a minor in Journalism. As a student, mentor, mentee, and organizer, Nicole is deeply invested in issues concerning the intersection of race and gender—approaching her work and her relationships through a womanist perspective. Nicole’s family has lived in areas of Inglewood, South LA, Compton, and Blair Hills for over sixty years—and she has experienced multiple waves of gentrification and flight. Nicole hopes to bring her unique perspective to the dialogue, and serve as a facilitator and a learner.

Richard Rosen

Richard Rosen is Senior Director of Supply Management – Proteins - of Sodexo, which serves more than 15 million consumers daily at 9,000 client sites in North America alone. He oversees protein sourcing for Sodexo in the United States and contributes to sustainability efforts in the essential areas of beef, pork, poultry, and seafood. Initiatives under his leadership include “raised without antibiotics,” “locally” raised land-based proteins, animal welfare (i.e. gestation crate free pork), and integrating small and medium-sized businesses into Sodexo’s supply chain. Richard has more than 25 years’ experience in supply chain management, developing procurement strategies and contributing to corporate responsibility for a better tomorrow.



Jonathan Rothchild

Jonathan Rothchild is Associate Professor and Chair of Theological Studies at Loyola Marymount University. He received his Ph.D. in Theological Ethics from the University of Chicago Divinity School. Engaging the theological, ethical, and legal dimensions of contemporary criminal justice practices, his work has recently appeared in the *Journal of the Society of Christian Ethics*, the *Journal of Religious Ethics*, the *Journal of Lutheran Ethics*, and the *Journal of Law and Religion* as well as his co-edited volume, *Doing Justice To Mercy: Religion, Law, and Criminal Justice* (University of Virginia). He co-directed an international forum on restorative justice at LMU in 2013.



Rabbi Arthur Gross-Schaefer

Rabbi Arthur Gross-Schaefer is also a lawyer and a CPA. In addition to his duties at LMU as the new interim campus rabbi, he is a full professor of business law and ethics and has been at LMU the last thirty-seven years. Professor Gross-Schaefer was recently named as one of the top 300 undergraduate professors in the United States by the Princeton Review. He was the founding Rabbi for LMU Hillel. He has also served as the Hillel Rabbi for USC and UCSB as well as Rabbi for a variety of congregations and for the past eighteen years continues to be the Rabbi for the Community Shul of Montecito and Santa Barbara. He publishes and speaks on a diverse number of topics on law, ethics, academic freedom and conflict resolution. In addition, he is the co-founder and president of the Avi Schaefer Fund that was created to honor the memory of his son and aims at creating more nuanced and civil dialogue surrounding the Israeli – Palestinian conflict. His wife, Laurie Gross, is an internationally known artist and liturgical consultant. He views his sons as his university.



Alex Taliadoros

Alex Taliadoros is the Project Coordinator at the Kalmanovitz Initiative for Labor and the Working Poor at Georgetown University. At the Kalmanovitz, he primarily researches and advocates for the adoption of the Just Employment Policy at Jesuit colleges and universities and more. He also coordinates efforts to innovate public-sector collective bargaining to better serve the needs of communities and the common good. Prior to joining the Kalmanovitz, Alex was a student member of the Georgetown Solidarity Committee where he participated in successful campaigns to unionize cafeteria workers, sever the university's contract with Adidas, and hold a contractor accountable for wage theft and abusive practices. As a student, he also served on the Georgetown University committee that oversees the implementation of the Just Employment Policy on campus for three years.



Brian Treanor

Brian Treanor is Professor of Philosophy, Charles S. Casassa Chair of Social Values, and Director of the Academy of Catholic Thought and Imagination at Loyola Marymount University. A nationally recognized scholar, he has published on a wide variety



PEOPLE, PLANET, PROFIT

of topics including environmental virtue, narrative identity, and human embodiment. Professor Treanor is the author or editor of six books, most recently *Carnal Hermeneutics* (Fordham 2015), *Being-in-Creation* (Fordham 2015), *Emplotting Virtue* (SUNY 2014), and *Interpreting Nature* (Fordham 2013). As a teacher-scholar at LMU, he has been awarded The President's Fritz B. Burns Distinguished Teaching Award, ASLMU Professor of the Year (twice), Greek Council Professor of the Year, and Honors Program Professor of the Year, among other awards.



Jessica Viramontes

Jessica Viramontes is the Alternative Breaks Program Coordinator at Loyola Marymount University. Jessica has worked primarily in non-profits around immigration rights, educational equity, homelessness, and food justice issues. She taught Ethnic Studies at East Los Angeles Community College for several years and has traveled extensively through Latin America focusing on human rights issues. On her spare time she plays the jarana (traditional instrument from Veracruz), soccer and is part of a theater collective where she's performed on issues of gentrification, immigration and incarceration. Currently, Jessica is also a part-time Law student.



Stephen B. Young

Stephen B. Young is the Global Executive Director of the Caux Round Table, an international network of experienced business leaders who advocate a principled approach to global capitalism. Young has published *Moral Capitalism*, a well-received book written as a guide to use of the Caux Round Table ethical and socially responsible Principles for Business. In 2008 Prof. Sandra Waddock of the Carroll School of Management of Boston College listed Young among the 23 persons who created the corporate social responsibility movement in her book *The Difference Makers*.

Young served as appointed Honorary Consul of Singapore in Minnesota for 5 years.

Young was educated at the International School Bangkok, Harvard College (graduating Magna Cum Laude) and Harvard Law School (graduating Cum Laude). In 1966 Young discovered - by tripping over a tree root - the bronze age site of Ban Chiang, in northeast Thailand, now a UNESCO World Heritage Site.



He came to Minnesota in 1981 to be the third dean of the Hamline University School of Law. Previously, he had been an Assistant Dean at Harvard Law School.

Young has also taught at the University of Minnesota Law School, Vietnamese history for the College of Liberal Arts, University of Minnesota and Public Office as a Public Trust for Minnesota State University - Mankato. He has published articles on Chinese jurisprudence, the culture and politics of Vietnam and Thailand, legal education, law firm management, Native American law, the history of negligence, and the law of war. His most recent article on legal philosophy discusses the morality of American law.

He has written numerous opinion articles for the Pioneer Press and the Minnesota Journal on Law and Politics and has been published in the Wall Street Journal, the New York Times, the Washington Post, the Minneapolis StarTribune, and the Minneapolis St Paul Business Journal. Young is now an editorial commentator, Twin Cities Daily Planet newswire, www.tcdailyplanet.info and writes a blog for the Caux Round Table.

Young has appeared as a commentator on public affairs and international events for KSTP-TV, KTCA-TV, WCCO-TV, and KARE-TV. He conceptualized and initiated the public affairs program Face-2-Face. He has practiced law for firms in New York City, St Paul and Minneapolis. He commenced litigation in Minnesota courts challenging the legality of the legal fees in the State's tobacco litigation and the right of Deep Ecology, a set of religious beliefs, to set public policy for management of national forests in Minnesota.

Young has served on the boards of the John Vessey Leadership Academy, a charter school in St Paul, Minnesota, Ready4K, an advocacy group promoting the benefits of early childhood education, the Citizens League, Resources for Child Caring, Vietnam's Women Memorial, Vietnam Social Service, Minnesota Sons of the Revolution and as Chair of United Arts in St Paul and the Minnesota Museum of Art. He is the founding board chair of the Center of the American Experiment.

Special Thanks to all those who gave their time, talent and support:



Dean Robbin Crabtree
Dean Dennis Draper
Allan Deck, S.J.
Susan Abraham
Tom Arteaga
Dorie Baizley
Gino Brancolini*
David Choi
Scott Delanty
Thomas Fleming
Allen Tropea-Gray
Gretchen Gusish
Anna Harrison*
Michael Horan
Paul Humphreys
Robert Hurteau
Lawrence Kalbers*
Faith Manners
Cathleen McGrath*
Ivan Montiel*
Jennifer Ramos*
Jonathan Rothchild
Arthur Gross-Schaefer
Brian Treanor*
Charles Vance
Kennedy Wheatley*
Thomas White
Sodexo

**Planning Committee*



LMU|LA Loyola Marymount University